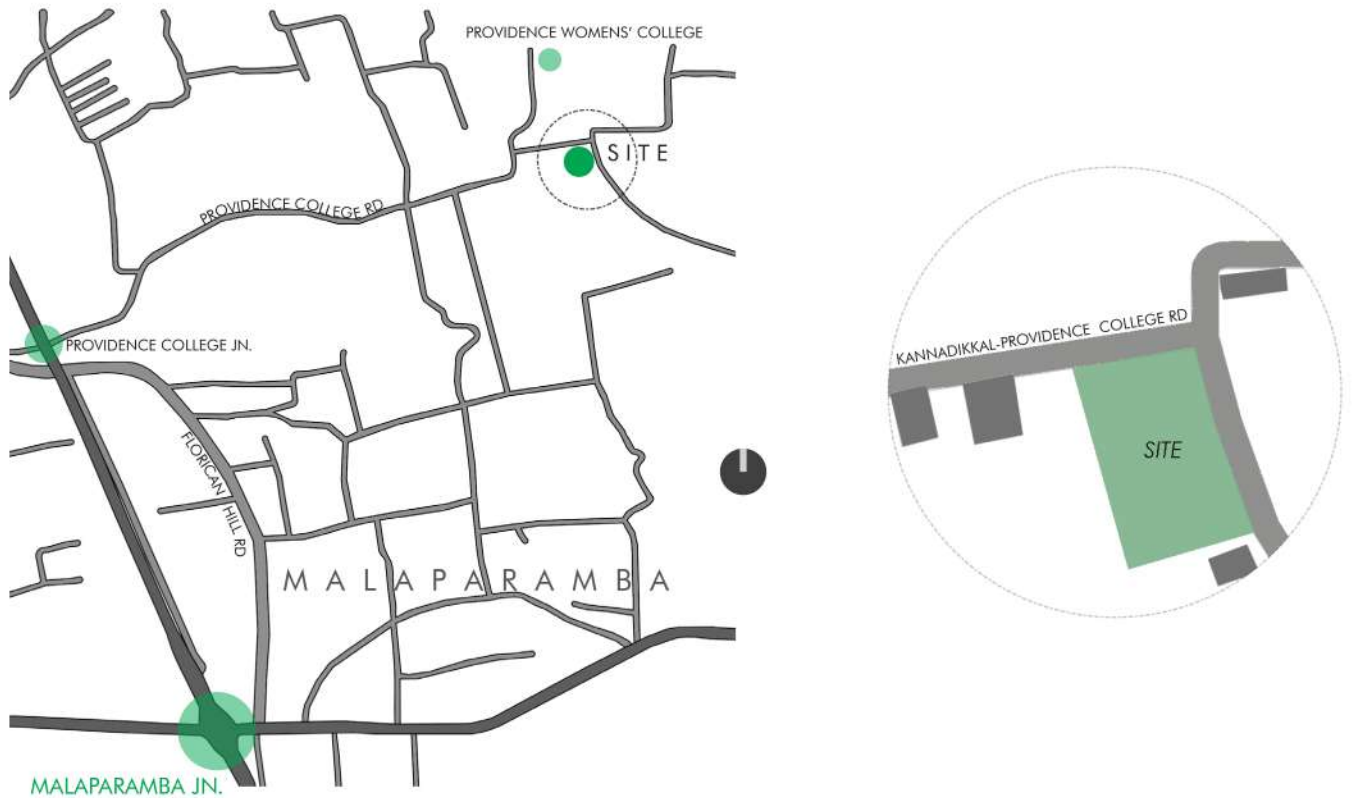




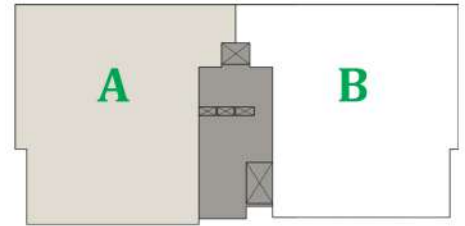
LOCATION PLAN



Nanma's first offering to Calicut.

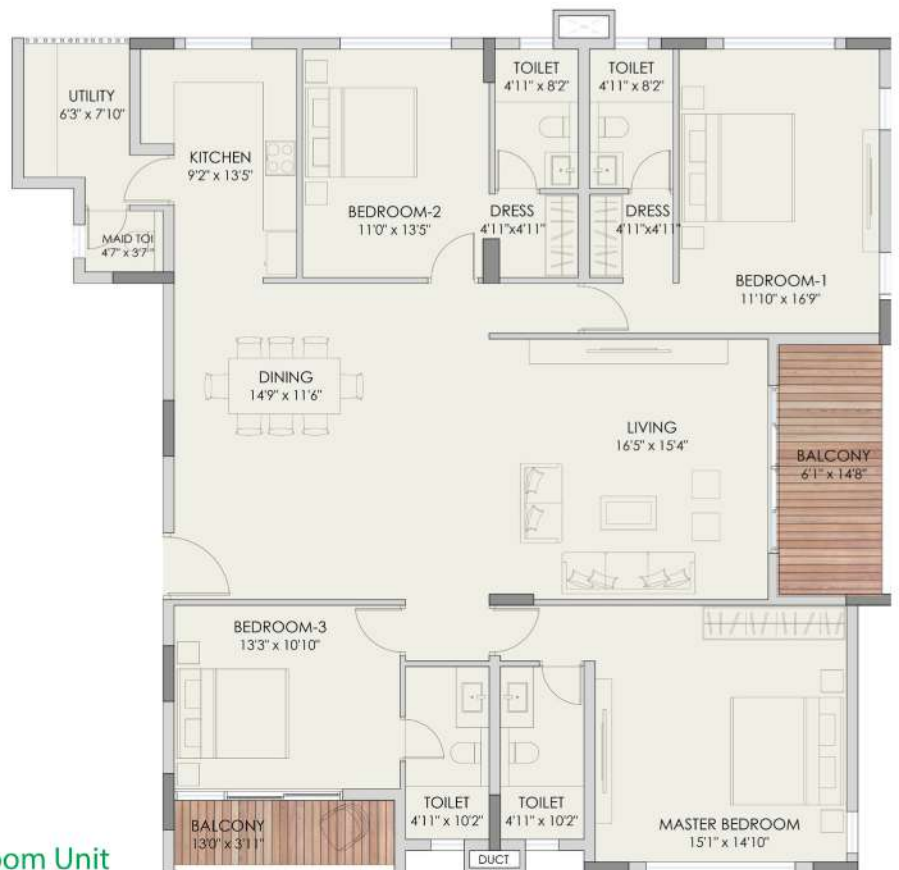
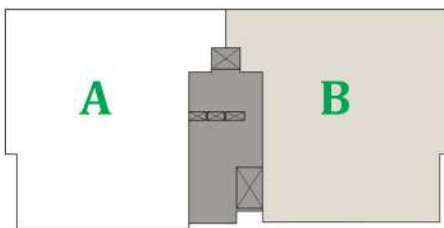
Just ten apartments at two per floor ensure an exclusive and premium lifestyle offering. Experience world-class design and premium finishes in this boutique project, planned by a highly experienced team of architects and engineers.

Nanma promises to bring a new lifestyle offering that will deliver homes that are not only spacious, well lit and airy- but also crafted as per highest standards of design, engineering and construction.



TYPE A
 SUPER- BUILT AREA: 2,677 sq.ft | 4 Bedroom Unit

FLOOR PLANS



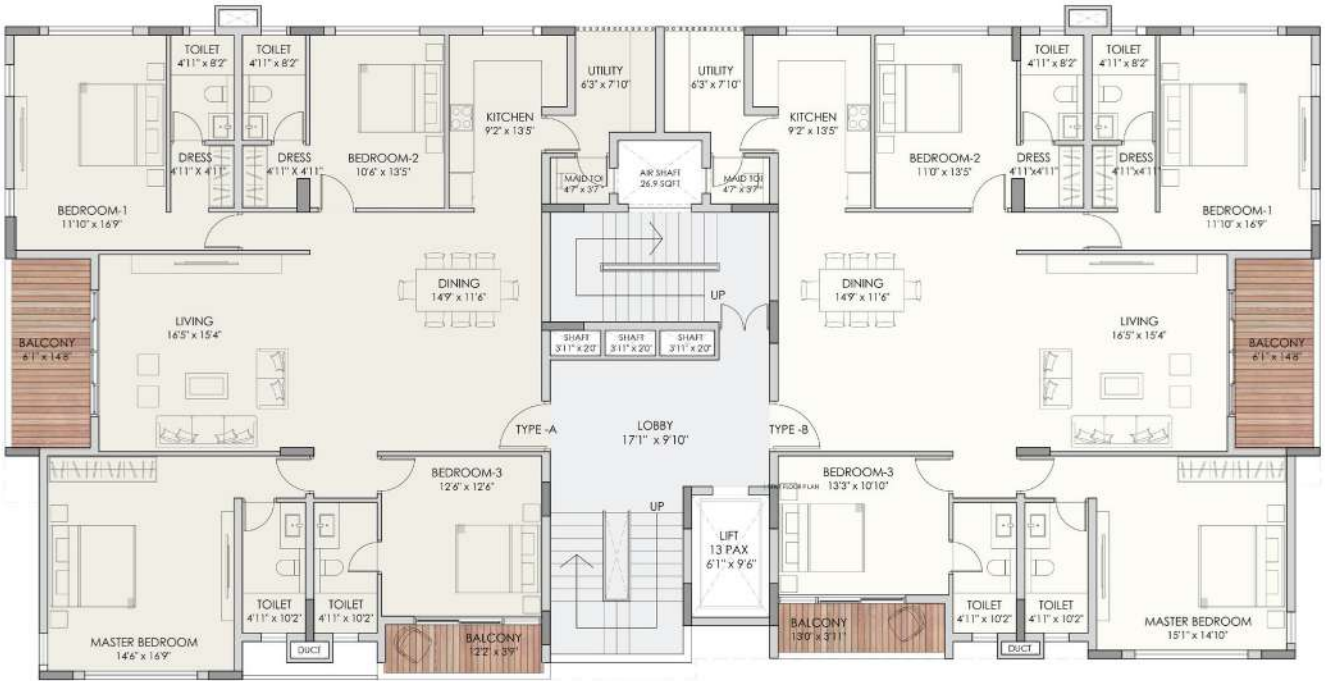
TYPE B
 SUPER- BUILT AREA: 2,661 sq.ft. | 4 Bedroom Unit



BASEMENT FLOOR PLAN



STILT FLOOR PLAN



TYPICAL FLOOR PLAN





TERRACE FLOOR PLAN





FEATURES



Elevators : Mitsubishi



Flooring : 80 x 80 tiles,
Kajaria or equivalent brand



Doors : Pre-hung doors from
Fero or equivalent



Roof-top Swimming Pool for
Kids & Adults



Paint : Berger or equivalent



CP & Sanitary Fixtures : Kohler
or equivalent



Switches : Schneider or
equivalent



NANMA

Nanma Properties

2B, 34/137G, Eastern HQ Tower, NH Bypass,
Edappally, Ernakulam - 682 024, Kerala.

P : +91 484 300 1176

M : +91 974 784 0000

E : customerdelight@nanmaconstruct.com

www.nanmaconstruct.com